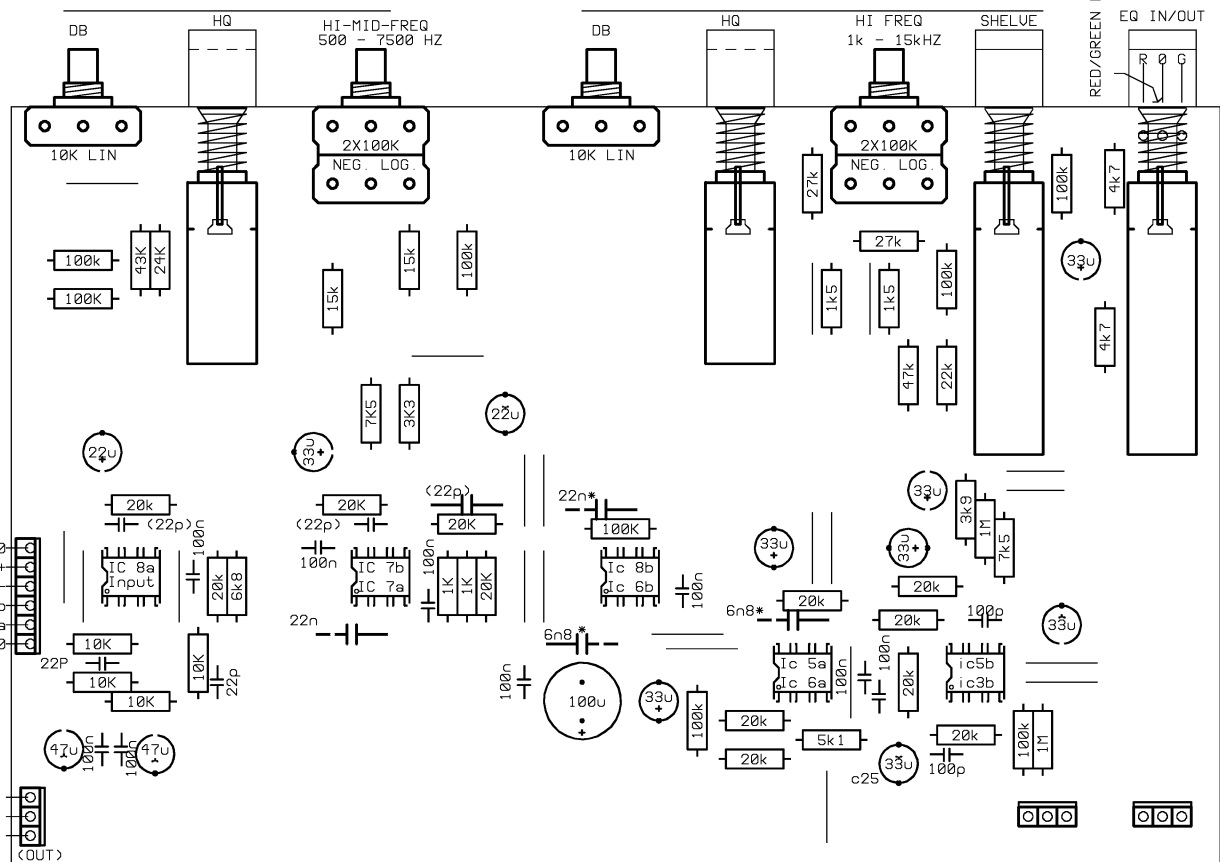
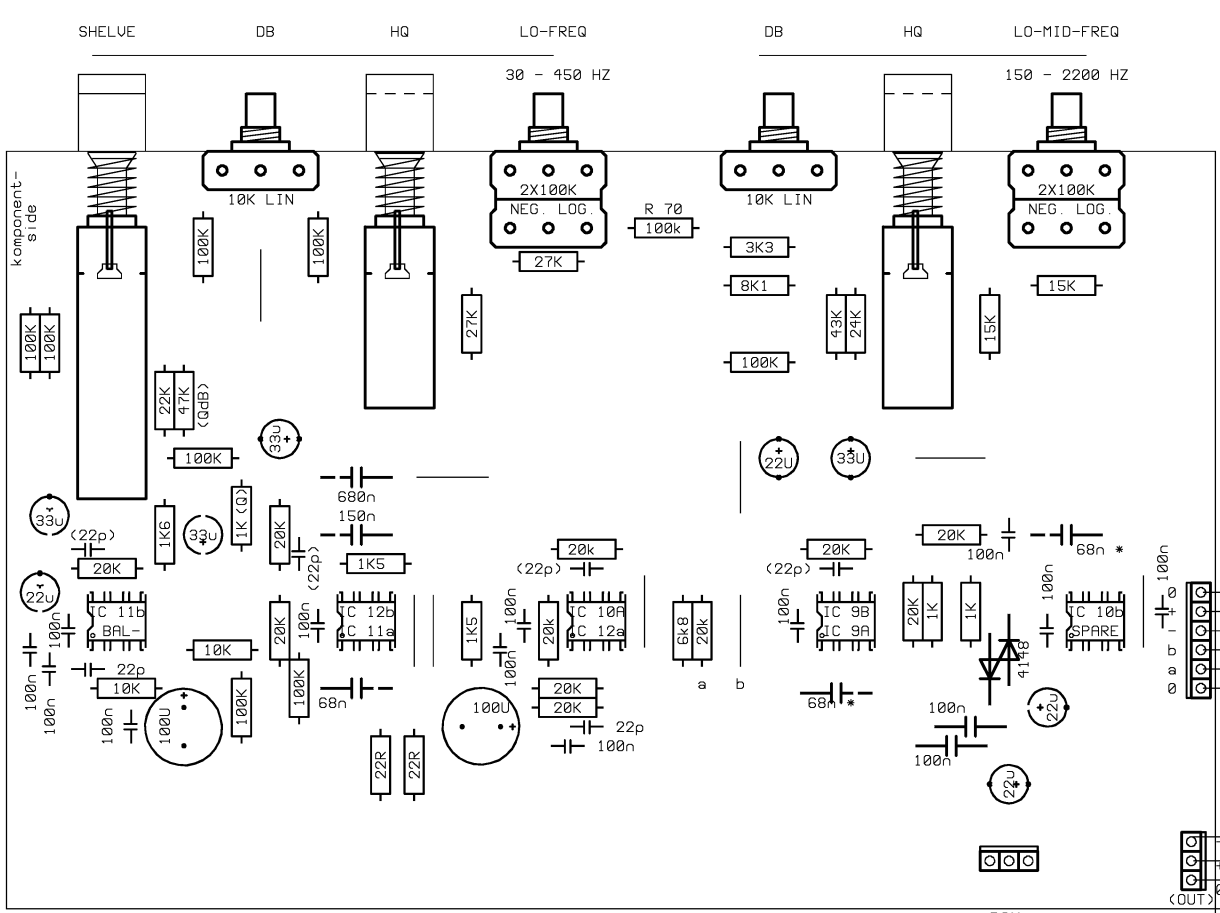


- CHANGES FROM SCHEMATIC:
- BAL INPUT
  - BAL OUTPUT
  - BYPASS SW.
  - BYPASS INDICATOR LED
  - SOME 100n PSU STAB.

GYRAF AUDIO	
www.gyraf.dk	
Rev no# 4	Date 07-2002
Subject: Calrec equalizer w/ balanced in & out	
Filename: EQALL.PCB	
Size:	Mount:



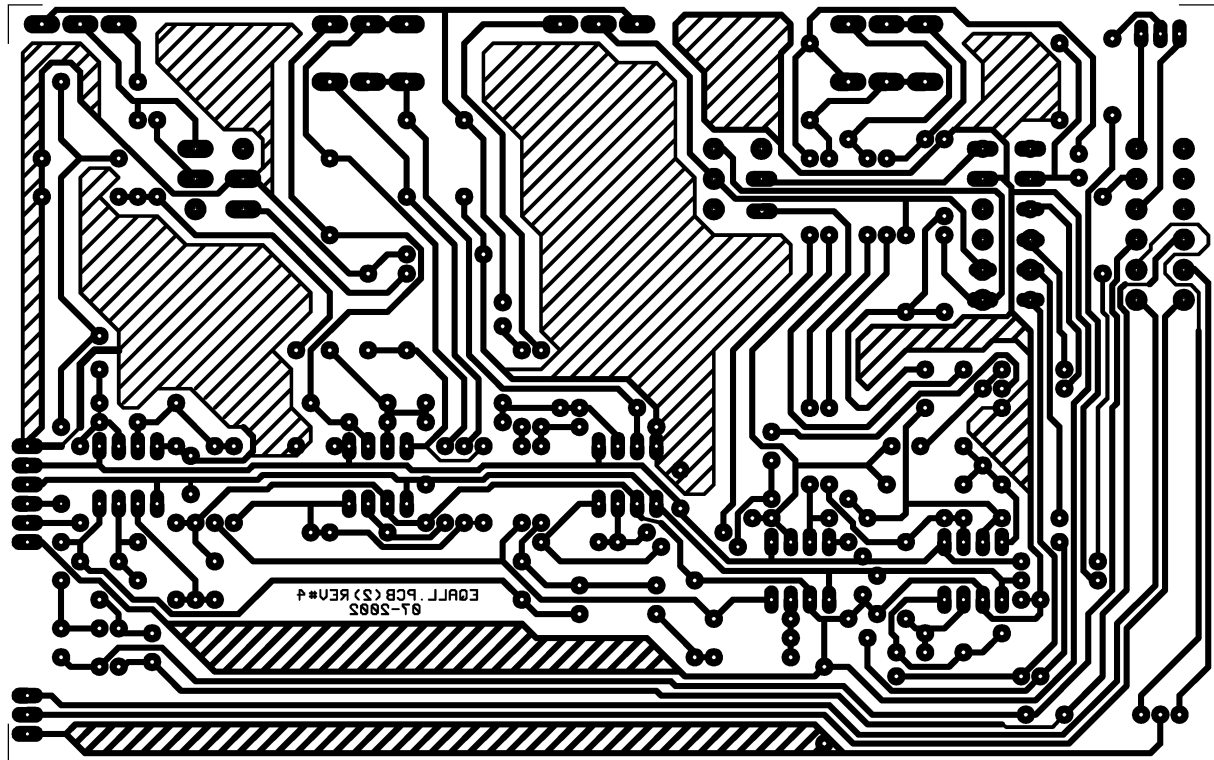
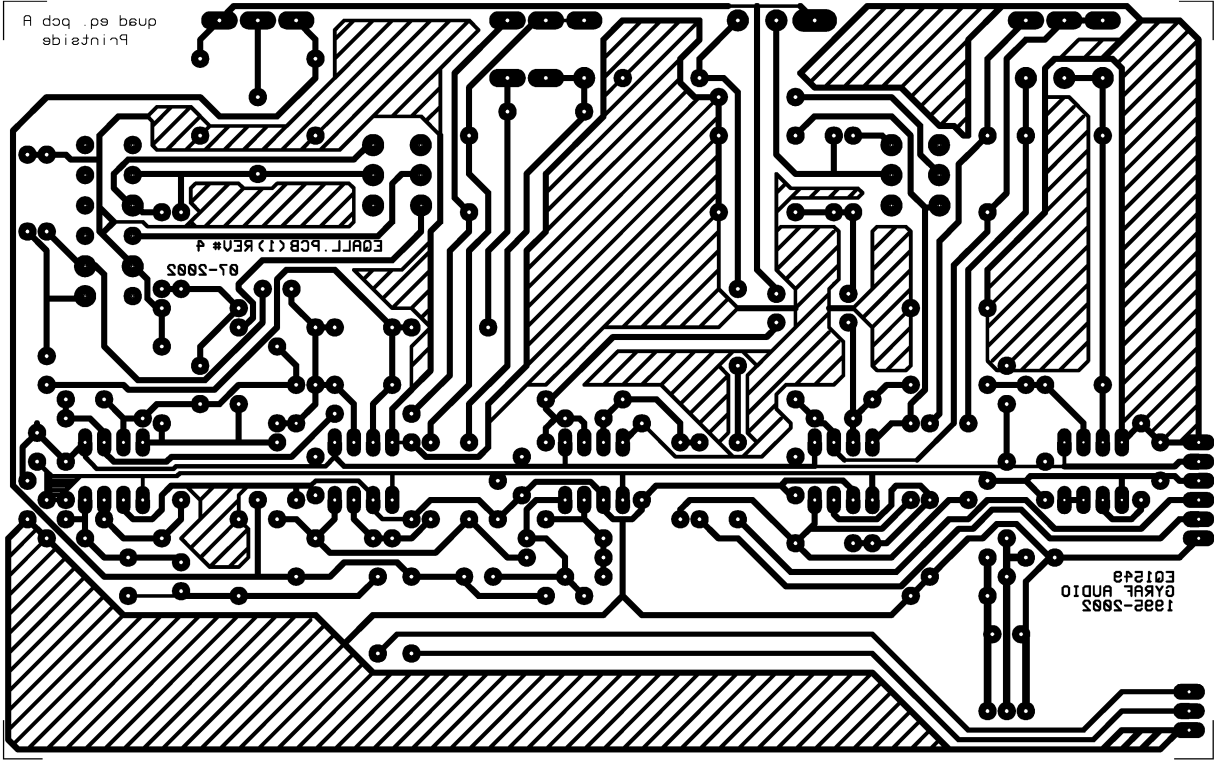
COMPONENT SIDE

**CHANGES FROM SCHEMATIC:**

- BAL INPUT
- BAL OUTPUT
- BYPASS SW.
- BYPASS INDICATOR LED
- SOME 100n PSU STAB.

BAL. INPUT    BAL. OUTPUT  
 -    +    -    +  
 33uF'S ARE 16V TANTALUM!

<b>GYRAF AUDIO</b> www.gyraf.dk	
Rev no#	4
Date	07-2002
Subject:	balanced equalizer w/ balanced in & out
Filename:	EQALL_PCB
Size:	Mount:



PCB TRACK SIDE

**PART LIST**  
**Calrec PQ1549**  
**by GYRAF**

compiled by  
Magnus Johansson  
Revision 1, 30-10-2002

**RESISTORS:**

22R	2
1K	5
1K5	4
1K6	1
3K3	2
3K9	1
4K7	2
5K1	1
6K8	2
7K5	2
8K1	1
10K	6
15K	4
20K	23
22K	2
24K	2
27K	4
43K	2
47K	2
100K	17
1M	2

**POTS:**

10K LIN, (maybe centre detent). (dB +/-)	4
2*100K NEG LOG (C-curve) (Frequency)	4

**SEMICONDUCTORS:**

1N4148	2
LM833 (NE5532 will do)	10
GREEN AND RED LED	1

**SWITCHES:**

SWITCH SPUN19035A Farnell nr 733-118 (Hi-Q)	4
SWITCH SPUN19036A Farnell no 733-120 (Shelve and Bypass)	3

**CAPACITORS:**

**TANTALUM**

33u/16V	12
---------	----

**ELECTROLYTIC**

22u/16V	6
47u/16V	2
100u/16V	3

**CERAMIC**

22p	11
100p	2

**POLY**

100n/63V RM 5mm	21
6,8n/63V RM 7,5 or 10mm	2
22n/63V RM 7,5 or 10mm	2
68n/63V RM 7,5 or 10mm	3
150n/63VRM 7,5 or 10mm	1
680n/63VRM 7,5 or 10mm	1

100n/63V RM 10mm	2
------------------	---

**MISC:**

POWERSUPPLY	1
2x18 V, ~ 2x100mA	
6mm KNOBS	8
MOUNTING CASE	1
DIL-8 SOCKETS	10
XLR IN's and OUT's	2
POWER INLET	1
POWER SWITCH	1
MOUNTING CABLE	
NUTS AND BOLTS	
PCB's: 2 pcs. Pre-photo-sensitised 100x160 mm single sided. (eurocard)	2